

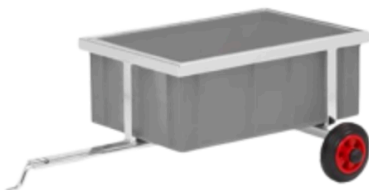
Declaration of Conformity

Ride-on toys
model 18250

We, Okido Toys B.V., duly and legally represented by the undersigned, hereby declare that the following products are compliant and have been tested by us against the listed standards and found in conformity with the directive 2009/48/EG of the European Union. Based on the above, Okido Toys B.V., is entitled to mark the control system for “Ride-on toys model 18250” with the CE marking demonstrating the conformity with the EG Toys directive 2009/48/EG.

Applicant: Okido Toys B.V.
Address: Vossenbergh 12, 4825 BH Breda
Manufacturer: Okido Toys B.V.
Address: Vossenbergh 12, 4825 BH Breda
Product: Ride-on toys model 18250
Directive:
Toys **2009/48/EG**
Standards: NEN-EN 71-1
NEN-EN 71-2
NEN-EN 71-3
NEN-EN 71-12
CEN-ISO/TR 8124-8
NPR-CEN/TR 15071

This study was carried out on the submitted type-samples of a product in conformity with the specification of the respective standards. The ride-on toy is labeled with the corresponding model number of the toy. The technical construction dossier is available upon request at Okido Toys B.V., The Netherlands.



Wim Sprangers
CEO
Okido Toys
22nd of October 2025